



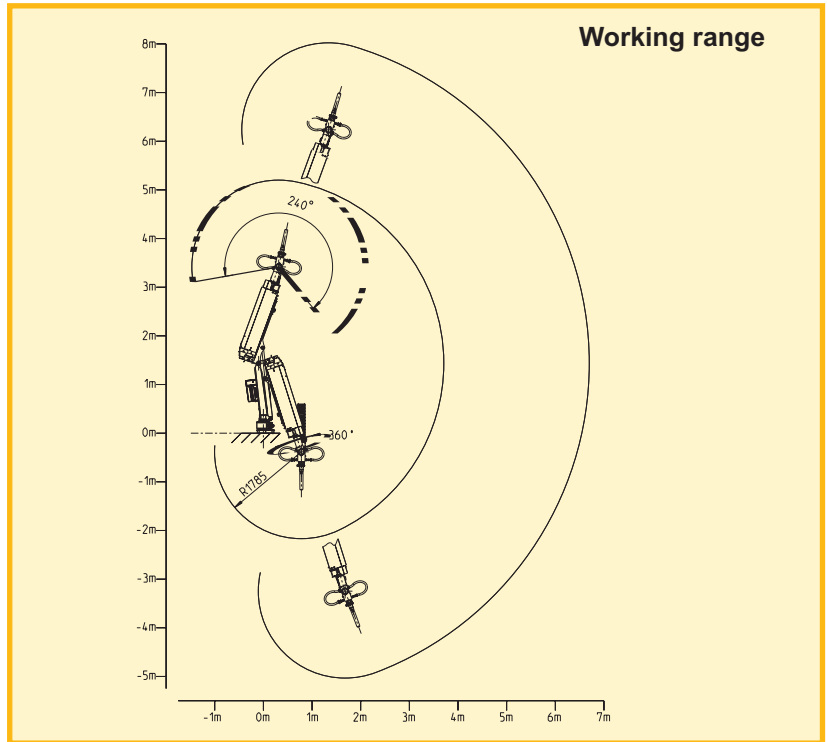
AL-302.1 Telescope Spraying Arm



For mining and small tunnels
Modular concept
Air, electric driven
Simple mounting onto carriers

Dimensions:

Transport length:	~ 2,25 m
Transport width:	~ 0,95 m
Transport height:	~ 1,95 m
Weight:	~ 580 kg
Max. spraying height:	8 m
Max. length:	7 m
Min. length:	2 m
Stroke arm:l	3 m
Spraying angle:	240 °
Nozzle angle:	360 °
Remote control:	electric (cable 15m)



The telescope spraying arm AL-302.1 has been designed specially for mines, small galleries and excavations.

Owing to its simple and rigid construction it is most suitable for mounting onto different carriers.

AL-302.1 Air: The unit control is working with a 24V battery.

Hydraulic unit	Electric	Air motor
Oil pressure:	210 bar	210 bar
Oil quantity:	28 l/min	25 l/min
Motor output:	7,5 kW	9,5 kW
Voltage / air consumption:	380-480V 50/60 cc	4 Nm³/min.



Picture on the left: Mounting of the AL-302.1 onto a Putzmeister carrier

Picture on the right: AL-302.1 mounting onto different carriers possible.

Technical and design modifications remain reserved at all times. Technical properties have been achieved under theoretical and normal conditions. Please consult the respective machine manual for all matters related to operations and maintenance.



Distributed by:

Multicrete Systems Inc.
 360-555 Hervo Street • Winnipeg, Manitoba R3T 3L6 CANADA •
 Phone: 204-262-5900 Fax: 204-262-5909 •
www.MULTICRETESYSTEMS.com