



www.multicretesystems.com

# MULTI-WHITE WHITE CEMENT PAINT TECHNICAL DATA SHEET

A brilliant white grout ideal for applications over shotcrete surfaces to enhance visibility

## DESCRIPTION

MULTI-white white cement paint is a sanded, cement based white grout containing silica sand and other carefully selected additives. MULTI-white can be mixed and applied as a thin spray using compressed air to cover existing shotcrete or concrete surfaces. MULTI-white's bright pigmentation is ideal for enhancing visibility in critical areas.

## USES

MULTI-white white cement paint is a cement based inert grout mix which can be applied as a thin paste paint coating onto **existing** shotcrete or concrete surfaces, producing:

- Bright white highly visible surface ideal for:
  - Lunch rooms
  - Refuge Stations
  - Safety Bays
  - Tramway Corners
  - Intersections
  - Shop Bays

## SAFETY ADVANTAGES

**Increased Surface Visibility:** MULTI-white white cement paint is a durable solution for increasing specific area brightness. It bonds effectively with the shotcrete or concrete substrate. Application is quick and easy and does not need any special equipment\*\* to do so. A cement-based "paint" slurry, inert, fume (odour) free.

## APPLICATION

**Step 1:** Mix MULTI-white white cement paint to the consistency required for placement. Add water as per bag recommendation, ideally using a .75 water cementitious ratio.

Although MULTI-white use is as a "slurry paint", over-watering will result in lower compressive strengths and inferior physical properties.

**Step 2:** Introduce potable water into a high shear mixer and then add MULTI-white white cement paint while operating at medium speed.

**Step 3:** Mix at high speed for a minimum of five minutes. Ten minutes in mortar style mixers. Apply with a Moyno type screw pump for best constant feed results.

\*\* : Spray nozzle, compressed air, mixer/pump. Contact us for recommended equipment list. It can also be mixed and trowelled on using lower water/cement ratios.

## PACKAGING

MULTI-white white cement paint is packaged in 25 kg plastic pails. MULTI-white white cement paint can however be custom packaged to meet specific project requirements.



Fig.1 Shotcrete surface prior to application of MULTI-white®

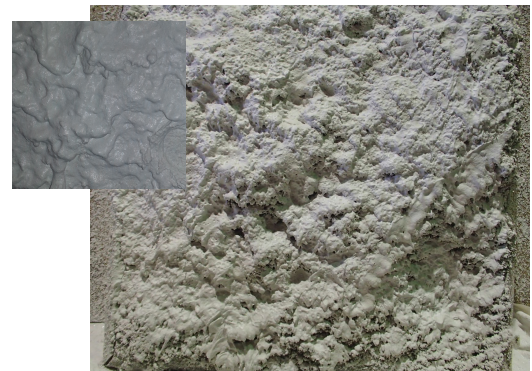


Fig.2 Shotcrete surface after application of MULTI-white® and Inset Closeup

## TECHNICAL DATA

The data outlined below is representative of typical values achievable under controlled laboratory conditions. Results obtained in the field may vary from those stated.

**Compressive Strength:** Mpa (lb/in<sup>2</sup>)

At 3 days:	24.7	(3582)
At 7 days:	30.3	(4395)
At 28 days:	37.4	(5424)

(.75 water cement ratio)

**Yield/Coverage:** sq.m (sq.ft)

Per 25kgs of Dry Product	4.6	(50)
--------------------------	-----	------

## SAFETY PRECAUTIONS

MULTI-white white cement paint contains Portland cement and carefully selected additives. Normal safety wear such as dust mask/respirator and rubber gloves used to handle conventional cement based products should be worn. Please refer to the Safety Data Sheet (SDS) which is also available.