

**NEW  
TECHNOLOGY!**

ENHANCED DILUTABLE FORMULA

# **BACK-SET** PLATINUM™

## **MOLECULAR CEMENT DISSOLVER**

**BACK-SET PLATINUM** IS AN ACID ALTERNATIVE WITH NO FUMES OR ODORS. THIS SAFE, BUT EFFECTIVE ALTERNATIVE IS A NEWLY DEVELOPED CONCEPT IN CHEMISTRY. **BACK-SET PLATINUM** MOLECULARLY ATTACKS THE PORTLAND CEMENT, COMPLETELY DISSOLVING THE HARDENED MOLECULAR STRUCTURE BACK INTO RINSABLE MUD! THIS TYPE OF IONIC EXCHANGE HAS NEVER BEEN USED BEFORE IN OUR INDUSTRY. THIS PRODUCT IS ONE OF A KIND!

**BACK-SET PLATINUM** DOES NOT CONTAIN MURIATIC, HYDROCHLORIC, HYDROFLUORIC, SULFURIC OR PHOSPHORIC ACIDS. THE ACTIVE INGREDIENT OCCURS NATURALLY IN SUGAR CANE SYRUP.

**GREEN-DESIGNED  
FOR THE ENVIRONMENT!**

## **URNS HARD, SET UP CEMENT BACK INTO RINSABLE MUD!**

**BACK-SET PLATINUM** is simple to use. Apply undiluted for heavy and extreme build-up removal. As a daily cleaner for light cement film, concrete splatter, grease and grime, **BACK-SET PLATINUM** may be diluted 1:1 up to 6:1. Regular use of **BACK-SET PLATINUM** never gives cement or concrete a chance to build up!

**BACK-SET PLATINUM's** enhanced formulation is designed to go up to 50% further than the competition, reducing both product cost and time, while preserving the environment.

**BACK-SET PLATINUM** removes cured concrete, cement, mortar, grout, and stucco from virtually any surface, without harm to equipment or workers, and it's available in a variety of sizes that can tackle any job.



- **BIODEGRADABLE**
- **ACID ALTERNATIVE**
- **COST-EFFECTIVE**
- **NON-HAZARDOUS**
- **NON-CORROSIVE**
- **NON-DOT REGULATED**

*Authorized Distributors:*



**Multicrete Systems Inc.**

360-555 Hervo Street  
Winnipeg, MB Canada R3T3L6  
**204-262-5900**

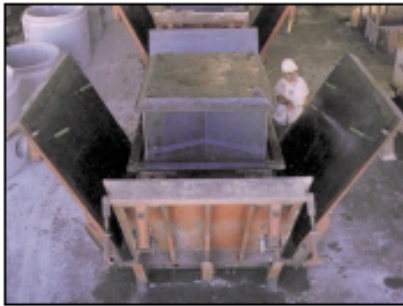


**RoMix**  
INCORPORATED

**CUSTOM FORMULATORS • MANUFACTURING CHEMIST**

# RoMix

REACTIVE • HIGH PERFORMANCE



## # RO-396

### FORM RELEASE AGENT

MULTI-USE FORM RELEASE AGENT, NON-HAZARDOUS AND NON-DOT-REGULATED. NON-STAINING, INCREASES FORM LIFE AND SAFE TO USE!

Ready  
To  
Use

#### CHARACTERISTICS:

- ★ CLEAN, POSITIVE STRIPPING
- ★ ELIMINATES BUG HOLES
- ★ NON-REGULATED
- ★ MFG. IN U.S.A.
- ★ NON-CARCINOGENIC
- ★ HIGH COVERAGE RATES
- ★ NON-STAINING
- ★ CORROSION PREVENTATIVE
- ★ VOC COMPLIANT
- ★ NON-FREEZING
- ★ HELPS KEEP FORMS CLEAN
- ★ WORKS IN ALL TEMPERATURES
- ★ SAFE & EASY TO USE
- ★ NON HAZARDOUS
- ★ BIODEGRADABLE

RO-396 FORM RELEASE AGENT CONTAINS AN ACTIVE AGENT DISSOLVED INTO A PROPRIETARY, STATE-OF-THE-ART MINERAL OIL CARRIER. RO-396 IS SPECIALLY FORMULATED TO BE APPLIED TO CLEAN SURFACES IN A THIN FILM FOR BEST RELEASING PERFORMANCE AND ECONOMY. RO-396 IS MOST EFFECTIVE IF SPRAYED. RO-396 IS A READY-TO-USE PRODUCT, DILUTION IS NOT RECOMMENDED AND CAN CAUSE DIFFICULTY IN STRIPPING. RO-396 CAN BE APPLIED MINUTES OR DAYS BEFORE A JOB.

RO-396 MEETS AND EXCEEDS EMISSION REQUIREMENTS FOR 40 CFR PART 59 FORM RELEASE (EPA LIMIT 450G/L). RO-396 MEETS AND EXCEEDS VOC COMPLIANCE FOR THE STATE OF CALIFORNIA, REGULATION 8, ORGANIC COMPOUNDS, RULE 3, ARCHITECTURAL COATINGS (CA LIMIT 250G/L). RO-396 MEETS AND EXCEEDS ALL VOC REGULATIONS BY HAVING A VOC CONTENT • 0.74 LBS/GAL, 88.54 G/L (TEST METHOD USED EPA-24).



#### COVERAGE RATES

1900-2100 sq.ft./gal. - non-porous  
1400-1800 sq.ft./gal. - semi-porous  
800-1600 sq.ft./gal. - highly porous  
\*results may vary due to conditions

#### TYPICAL PROPERTIES:

- PHYSICAL FORM - GOLDEN AMBER LIQUID
  - SPECIFIC GRAVITY - 0.893G/ML
  - LBS PER GAL. - 7.15 • ODOR - NEGLIGIBLE
  - FLASH POINT -> 305°F • DOT CLASSIFICATION - NON-REGULATED • INSOLUABLE IN WATER
- ✓ TEST SPOT RECOMMENDED ON RUBBER AND LATEX MOLDS.

Distributed by

Authorized Distributors:

**Multicrete Systems Inc.**

360-555 Hervo Street  
Winnipeg, MB Canada  
R3T3L6

204-262-5900



 **RoMix**  
CHEMICAL and BRUSH INC.

CUSTOM FORMULATORS • MANUFACTURING CHEMIST

Toll Free: 800-331-2243

Fax: 817-685-0877

E-Mail: [RoMix@sprynet.com](mailto:RoMix@sprynet.com)

[www.romixchem.com](http://www.romixchem.com)



# RoMix

## #1125 RX Sprayer

*RoMix's #1125 RX Sprayer is designed to apply multi-type products from cleaners to release agents!*



### FEATURES:

- 2.5 GALLON CAPACITY
- FUNNEL TOP FOR EASY FILLING
- POLY FLOW CONTROL WITH LOCK ON FEATURE
- REINFORCED HOSE
- VITON SEALS AND GASKETS
- BRASS & POLY NOZZLES INCLUDED



## #1125 RXF Foamer

*RoMix's #1125 RXF Foamer is designed to apply solvers, soaps, and detergents. The thick foam increases product dwell time and cleaning effectiveness!*



### FEATURES:

- SAME AS ABOVE
- FOAM ENDUCTOR
- ALL POLY FOAM NOZZLE

 **RoMix**  
CHEMICAL and BRUSH INC.

800-331-2243 TOLL FREE  
817-685-0877 24 HR. FAX  
www.romixchem.com

*Distributed by:*  
*Authorized Distributors:*  
**Multicrete Systems Inc.**

360-555 Hervo Street  
Winnipeg, MB Canada  
R3T3L6

**204-262-5900**



# RoMix

## ANTI-CORROSION PRE-TREATMENT

# RUST GUARD™

## STOPS RUST AND CORROSION



RUST GUARD ANTI-CORROSION PRE-TREATMENT PROVIDES A MOLECULAR FILM (A THIN MOISTURE RESISTANT SHIELD), THAT **POLAR BONDS** TO THE METAL SURFACE (FERROUS OR NON-FERROUS) AND BLOCKS THE CORROSION PROCESS!

RUST GUARD CANNOT CRACK OR PEEL OFF, IT PENETRATES THE SMALLER CAVITIES TO RESIST MOISTURE AND PREVENT RUST. THE **POLAR BONDING** MAKES IT CLING LIKE A MAGNET AND RESISTS BEING WASHED AWAY. THE RESULT IS THE ABSORPTION OF PROTECTIVE IONS ONTO THE METAL SURFACE CHEMICALLY SHUTTING DOWN THE CORROSION PROCESS!



- POLAR BONDS TO THE METAL SURFACE
- PROVIDES A MOLECULAR FILM MONOLAYER
- NON-TOXIC
- HARMLESS TO PAINT
- SAFE FOR CARS, TRUCKS, FORMS AND EQUIPMENT

USE RUST GUARD AT FULL STRENGTH, DO NOT DILUTE. APPLY WITH ROMIX #1125RX SPRAYER, MIST UNTIL CAVITIES, CRACKS AND LAP JOINTS ARE SATURATED. MAY ALSO BE BRUSHED OR APPLIED BY DIPPING. WAIT 2-3 DAYS BEFORE WASHING A TREATED VEHICLE OR PART. TREATMENT LASTS FOR 60 DAYS OUTDOORS - 1 YEAR INDOORS.

 **RoMix**  
CHEMICAL and BRUSH INC.

CUSTOM FORMULATORS • MANUFACTURING CHEMIST



*Distributed by*

**Multicrete Systems Inc.**  
360-555 Hervo Street  
Winnipeg, MB Canada R3T 3L6  
204-262-5900



# RoMix

**PREMEASURED  
REUSABLE  
CONTAINERS**

# Ro-Flow™

**Ad Mixture for Controlled Low Strength Material (CLSM)**

- Comes in Reusable Premeasured Containers
- Expands Volume of Concrete Up to 50% To Lower Cost Per Yard

FLOWABLE FILL IS DEFINED AS A LOW-STRENGTH BLEND OF SAND, WATER AND CEMENT (AND OCCASSIONALLY FLYASH), TAKING THE PLACE OF CONCRETE, COMPACTED SOILS, OR SAND USED TO FILL AROUND PIPES OR VOID AREAS. OTHER APPLICATIONS INCLUDE FILLING IN BRIDGE ABATEMENTS, FOUNDATION SUB BASES, OR ABANDONED MANHOLES AND WELLS.



**RO-FLOW™** IS OFFERED IN REUSABLE, PREMEASURED, TRUCK-LOAD DOSE CONTAINERS. THE TRUCK OPERATOR SIMPLY OPENS AND POURS THE CONTENTS INTO THE MIX. CONTAINERS MAY BE STORED IN CONDITIONS AS LOW AS 30° FAHRENHEIT, WHICH ALLOWS THE TRUCKS TO BE LOADED THE NIGHT BEFORE THE JOB, AND CUTS DOWN ON PREPERATION TIME.

THE KEY BENEFITS OF **RO-FLOW** OVER OTHER BACKFILLS ARE SPEED, COST AND RELIABILITY OF COMPACTION STRENGTH. IT ALSO LOWERS THE COST PER YARD, AND INCREASES THE YARDS PER TRUCKLOAD TO PROVIDE UP TO 50% SAVINGS OVER FLOWABLE FILL PRODUCED WITHOUT AN AIR GENERATOR.



**RO-FLOW IS THE MOST COST EFFECTIVE CLSM ADMIXTURE AVAILABLE!**

**RoMix**  
CHEMICAL and BRUSH INC.

CUSTOM FORMULATORS • MANUFACTURING CHEMIST

Distributed by



**Multicrete Systems Inc.**  
360-555 Hervo Street  
Winnipeg, MB Canada R3T 3L6  
204-262-5900

# RoMix

COMPOSITE  
& STEEL  
SAFE!

## NANOTECHNOLOGY

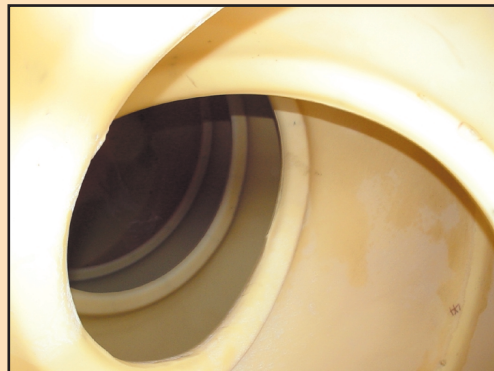
# DRUM DOCTOR™

Molecular Recyclable Interior Drum Treatment



- ★ GREEN CHEMISTRY: READILY BIODEGRADABLE
- ★ RETAIN FULL PAYLOAD PROFIT
- ★ MAINTAIN CLEAN DRUM INTERIOR
- ★ RECYCLABLE

ROMIX'S DRUM DOCTOR™ IS AN INTERIOR DRUM TREATMENT BASED ON NANOTECHNOLOGY. WHEN ADMINISTERED AS PRESCRIBED, DRUM DOCTOR™ MAINTAINS A CLEAN DRUM INTERIOR, SAVING YOUR FULL PAYLOAD PROFIT. DRUM DOCTOR™ ALSO ELIMINATES THE COST OF CHIPPING, INTERIOR DRUM DAMAGE, AND REDUCES LABOR COST.



WITH DRUM DOCTOR™ THERE ARE NO MORE CHIPPER DENTS WHICH CAUSE EXPENSIVE PAINT LOSS. WHEN USED AS DIRECTED, DRUM DOCTOR™ HAS BEEN CERTIFIED LOAD SAFE THROUGH INDEPENDENT TESTING CONDUCTED BY **(psi)** WHICH IS DISTINGUISHED AS A LEADER IN CONSTRUCTION MATERIAL TESTING SERVICES. **(psi)** IS RANKED AS ONE OF NORTH AMERICA'S LARGEST CONSULTING ENGINEERING FIRMS ACCORDING TO ENR.



*Tested in conjunction with:*

**McNeilus**  
An Oshkosh Corporation Company

*\*Composite Drum Safe*

**RoMix**  
CHEMICAL and BRUSH INC.  
CUSTOM FORMULATORS • MANUFACTURING CHEMIST

*Distributed by*



**Multicrete Systems Inc.**

360-555 Hervo Street

Winnipeg, MB Canada R3T 3L6

204-262-5900



# RoMix

HIGHLY  
CONCENTRATED &  
BIODEGRADABLE!

## HIGHLY POLISHED ALUMINUM CLEANER TECHNOLOGY FOR A GREEN ENVIRONMENT!



# ALUM-A-GLOSS™

- ★ NON-REGULATED BY DOT (CFR49 SEC. 173.24)
- ★ NON-CORROSIVE (ASTM:G-31)
- ★ CONTAINS FOOD GRADE MATERIALS (FDA-GRAS RATING)

ALUM-A-GLOSS IS DESIGNED TO CLEAN AND POLISH IN ONE-STEP, MAKING SHORT WORK OF TOUGH JOBS WITH LITTLE OR NO SCRUBBING. THIS NON-HAZARDOUS FORMULA NEEDS TO BE DILUTED BEFORE USE! ALUM-A-GLOSS WILL REMOVE ROAD FILM, GRIME, LIGHT CEMENT FILM, SCUM, ALGAE, LIME DEPOSITS, HARD WATER STAINS, OXIDATION, AND MANY OTHER PROBLEM STAINS FROM EVERYDAY CLEANING. CAUTION: USING THIS PRODUCT TOO STRONG CAN DULL POLISHED ALUMINUM. WEATHERING, CEMENT, AND OTHER ELEMENTS WILL ALSO DULL POLISHED ALUMINUM. TEST A SMALL AREA BY ALLOWING PRODUCT TO SET FOR 2 MINUTES. ADJUST DILUTIONS TO YOUR SATISFACTION.



(SEE PRODUCT LABEL FOR STARTING DILUTIONS)



ALUM-A-GLOSS WORKS EXTREMELY WELL WITH OUR MEGA-H2O FOAMING AUTO DILUTION SYSTEM THAN CLEANS WITHOUT THE USE OF ANY BRUSHES. SAVES TIME AND MONEY!



### NOTE:

PRE-TEST SURFACE FOR PROPER DILUTION OF ALUM-A-GLOSS. ALWAYS TEST A SMALL AREA BEFORE BEGINNING THE ENTIRE JOB.

**RoMix**  
CHEMICAL and BRUSH INC.  
CUSTOM FORMULATORS • MANUFACTURING CHEMIST



Distributed by

**Multicrete Systems Inc.**

360-555 Hervo Street  
Winnipeg, MB Canada R3T3L6

**204-262-5900**


# RoMix

Nothing on  
the market  
like it!






TECHNOLOGY FOR A  
GREEN ENVIRONMENT!



## BRITE-CAB™ SUPER SOAP

 Dilute up to 10 to 1 with water with any RoMix  
dispenser system



-  HIGH-FOAMING ACTION
-  BIODEGRADABLE
-  NON-ABRASIVE
-  NON-REGULATED
-  ANTI-CORROSION PROTECTION



ROMIX'S "BRITE-CAB" SUPER SOAP IS A THICK CONCENTRATE THAT WAS FORMULATED BY OUR CHEMIST AS A NON-HAZARDOUS PRODUCT. THIS PLEASANT TO WORK WITH, LOW PH CONCENTRATE GOES TO WORK INSTANTLY, EASILY ATTACKING ROAD FILM, DIRT, GRIME CEMENT FILM AND LIGHT DUST. "BRITE-CAB" COATS AND PROTECTS PAINTED AND RAW METAL SURFACES, LEAVING A LONG LASTING REPELLANT PROTECTION AGAINST CORROSION, CAUSED BY CEMENT, ACIDS AND WEATHERED CHIPPED PAINT. AFTER ONLY A FEW WASHINGS YOU WILL NOTICE THE BRIGHTENING EFFECT TO YOUR PAINT ALONG WITH THE ANTI-CORROSION PROTECTION!

**RoMix**  
CHEMICAL and BRUSH INC.  
CUSTOM FORMULATORS • MANUFACTURING CHEMIST



Distributed by

**Multicrete Systems Inc.**  
360-555 Hervo Street  
Winnipeg, MB Canada R3T3L6  
**204-262-5900**