

TRANSPORT /MIXER CARS

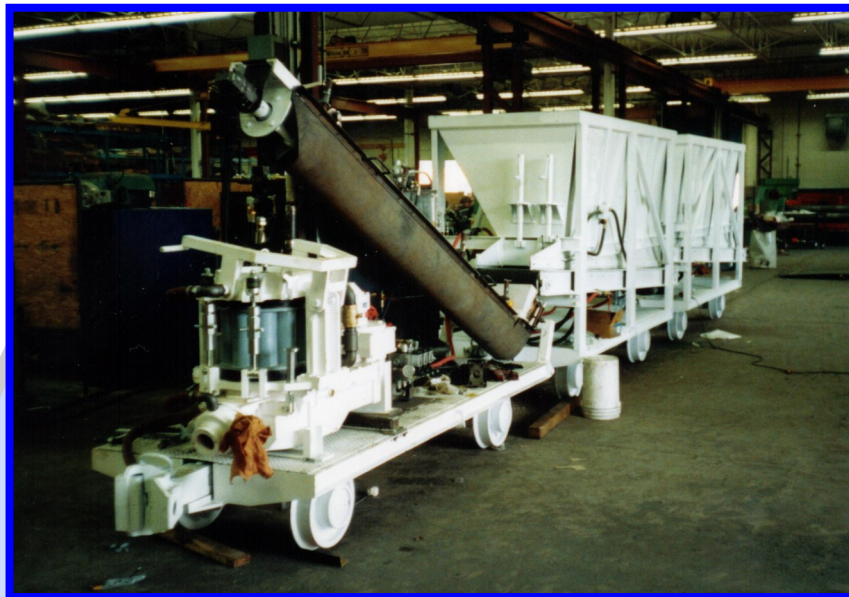
Underground Carriers

Transport- Proportioning Mixer Cars

- 5 m³ Capacity, custom-designed for limited access areas.

Mixer Cars

- Complete with power pack and shotcrete spraying machine
- Rugged and user friendly
- Mixing capacity of up to 15 m³ per hour for shotcrete, concrete and grout.



Split Hopper Cars

- For total mix-design freedom
- Bottom Conveyor
- Hydraulic powered for precision

