

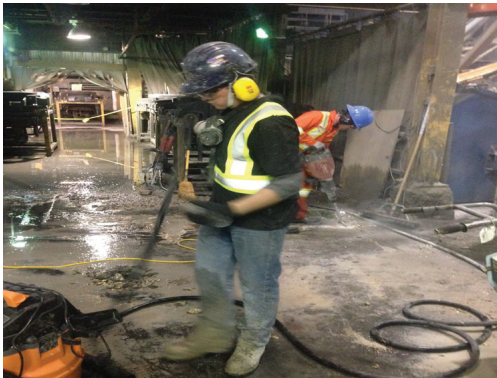
GU CEMENT & DRY MIX

Multicrete delivers Type 10 Cement at amazing prices!

•**Portland Cement Type GU** is a quality building material suitable for all uses. We carry 40kg and 25kg bags.

•**Rapid Set Concrete Mix** is a quality pre-packaged dry mix for High Early Strength. Packaging available in up to 1 cu.yard bulk bags.

REPAIRS & RESTORATION



SUPPORT YOU CAN COUNT ON!™

www.multicretesystems.com

CUSTOM SOLUTIONS

OTHER PRODUCTS WE SUPPLY:

CELLULAR CONCRETE

CEMENTED ROCK FILL

CEMENTED PASTE FILL

WELLBORE THERMAL CEMENT

PRE-CAST CONCRETE

Multicrete supplies materials in paper bags, bulk bags, or bulk

WE ALSO DO SHOTCRETE



CALL US TODAY OR GO ONLINE !

Sales: +1(204) 262-5922
info@multicretesystems.com

GTA Sales: +1(905) 677-1053

Saskatoon Sales:+1(306) 651-2727

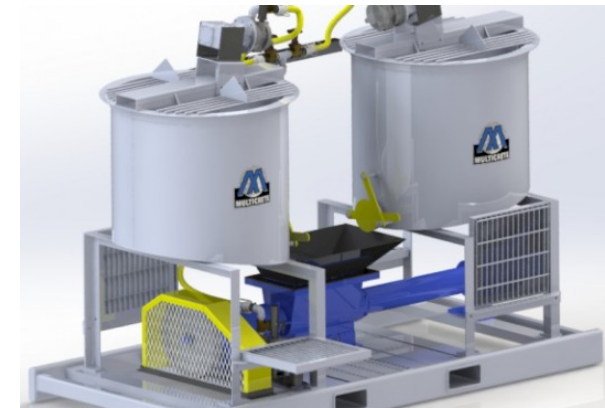
www.multicretesystems.com



WE SELL SOLUTIONS!™

**GROUTING & SHOTCRETE
EQUIPMENT**

REPAIRS & RESTORATION



SALES:

+1(204) 262-5922

SHOTCRETE | CONCRETE | GROUT

EQUIPMENT: SALES & RENTALS

SERVICES: REPAIRS & RESTORATION

www.multicretesystems.com

REPAIRS & RESTORATION

Rehabilitation of existing concrete structures

•
Concrete Restoration

•
Stairs, Sidewalks, Pads, Ramps

•
Sealing & Waterproofing

•
Floors Leveling & Replacement

•
Column & Bridge Repairs

•
Grouting In & Out of Water

REED Concrete Pumps



This rugged pump features an "Open-Loop" hydraulic system and a variable displacement hydraulic pump. The removable hydraulic lift mixer is powered by the same hydraulic system as the pump. Quick disconnects and pin connectors make it easy to remove when not in use. The simple design of the B20X makes it easy to trouble-shoot and service.

We also have Concrete Line Pump Hoses, Fittings & Slick-Pak

GROUT EQUIPMENT

MSI Mighty Mite™ Grout Mixer



This versatile unit is designed to mix and pump neat cement, sanded grouts and most commercial pre-blended grout mixes. This unit features one 30-gallon (113 liters)

mixing tanks, a 2-gallon (7.5 liters) holding hopper through a progressive cavity grout pump.

CELLULAR CONCRETE

Auto-Foam Cellular Concrete System With Auto-Foam Generator for High Volume Production

Multicrete features the high volume Cellular Concrete Production Plant. This unit consists of a 5 ton dry cement bin, which feeds a 1 cubic meter colloidal mixer and from the mixer discharges into a 3 cubic meter agitator hopper.



The hopper feeds a Moyno pump, which conveys the material through a static mixing system, where the foam is added. The Autofoam Generator is capable of producing 20-100 cu-bic meters per hour. This system can be operated manually, through touch screen controls or completely automatic via PLC. A wide range of densities, from 5 pcf to 120 pcf, can be produced.

MSI Foam Generator



CALL NOW +1(204) 262-5922

GROUT SOLUTIONS



Multicrete TC3100™ Grout Mixer



MSI TC3100 is light-weight, easy to use, easy to clean up, and works with existing air supplies as it is powered by a 4.6 HP vane air motor with reducer. It mixes grout product extremely well and utilizes it's 20 gallon mixing tank capacity.

MSI Cobra™ Grout Plant

MSI's Cobra Grout Plant is a low shear, modular skid mounted mixer. This unit features twin 83 gallon (314 liters) capacity mixing tanks, a 15 gallon (57 liters)



Diesel/Hydraulic or Electric powered.

Multicrete Colloidal SD-6 MIXER



This machine is a single or dual drum, high seed, high shear unit designed for the efficient production of cement-based grouts. The product exhibits colloidal

nearly immiscible in water. Can handle cement/sand ratios of up to 1:3 by weight and produce pumpable mixtures. Will mix a wide range of materials such as cement/PFA, pre-blends, bentonite, lime or chemicals.

MULTICRETE TWISTER™ Grout Plant



The mixer can be powered by with Air, Electric or Diesel over hydraulic. Electric motor 20Hp 3 phase, 360, 380 OR 575v.

19 HP RM 410 Air Motor requires a supply of compressed air with a flow rate of 500 cfm @ 90 psi . 36 to 84 HP Diesel Engine Size according to pump size.

